

PARTNERING WITH OUR COMMUNITIES
EVERY DAY TO PROVIDE

OUR BEST FOR YOU

2016 REPORT TO THE COMMUNITY



TABLE OF CONTENTS

- 3 Welcome
 - 4 Addressing Alzheimer's in Paynesville
 - 6 Feeling Good MN
 - 8 A Bright Future for Long Prairie
 - 10 Project H.E.A.L. Expands to Sauk Centre
 - 11 Bouncing Back in Monticello
 - 12 Project Brain Safe: Collaborating on Concussions
 - 13 Making a Difference In Melrose
 - 14 Serving Our Communities
 - 15 CentraCare Health Financials
 - 16 CentraCare Health Foundation
 - 17 Ways to Give
 - 18 A Center for Cancer Survivors
 - 19 Running the Streets of St. Cloud
 - 21 CentraCare Health Foundation Financials
 - 21 Donors with gifts of \$10,000 and more
 - 27 Capital Campaign Spotlight: Long Prairie and Melrose
-

CENTRACARE HEALTH BOARD OF DIRECTORS

David Agerter, MD
Mike Benusa
Teresa Bohnen
Chris Coborn
Kenneth Holmen, MD

Steve Laraway
Denise Rosin
Christian Schmidt, MD
Robert Stocker, MD
Joe Uphus

Mary Jo Williamson
Gene Windfeldt
Mohamed Yassin, MD



MISSION

We work to improve the health of every patient, every day.

VISION

We will be the leader in Minnesota for quality, safety, service and value.

WELCOME

Nothing is more personal than your health. That's why we strive to give our best for you every day. This is only possible if we partner closely with you to help keep you healthy and care for you when illness strikes.

Our community partnerships look different, because each community is unique. Sometimes we partner with residents or local businesses, or other not-for-profit organizations (churches, the YMCA, Catholic Charities, foodbanks, etc.), and at times with city government and other healthcare providers. In this report, you will see a variety of ways in which CentraCare partners with you to serve the nearly 700,000 people who live in our communities.

As we expand and deepen our relationships with you, rest assured that our commitment to providing excellent quality care remains at our core. Today, CentraCare Health employs nearly 10,000 people in areas ranging from primary care to senior services to hospital services – and everything in between. Many of our care sites have received local and national recognition for superior quality and service, and these can be found at www.centracare.com. For example, St. Cloud Hospital has been named a national "100 Top Hospital" ten times and has earned Magnet status for excellence in nursing every year since 2004. Few health systems in the country have achieved either of these accomplishments.

Please enjoy the enclosed stories. As you do, remember that we have a shared purpose. You have supported CentraCare, for which we are deeply grateful, and we will always support you. As healthcare continues to change, know that we're in this together, and we are here to partner with you, every step of the way.

Regards,

A handwritten signature in black ink that reads "Ken Holmen MD". The signature is fluid and cursive.

Ken Holmen, MD
President & CEO
CentraCare Health

CENTRACARE Health



ADDRESSING ALZHEIMER'S IN PAYNESVILLE



Watch the video online at
CentraCare.com/2016

THE NUMBER OF
65 YEAR OLDS
WITH ALZHEIMER'S
WILL INCREASE

40%

OVER THE NEXT
10 YEARS



Over the next decade, the number of people with Alzheimer's who are 65 and older is projected to increase 40 percent. In Paynesville, where the largest segment of the population is made up of people 70-years-old or older, leaders recognized this and took action. Paynesville may be a small town, but it's having a big influence on how communities across the country care for elders, specifically those with Alzheimer's.

ALZHEIMER'S IS THE MOST COMMON FORM OF DEMENTIA

In 2015, as a result of work led by the Paynesville ACT on Alzheimer's committee, the city declared itself "dementia-friendly." CentraCare Health is proud to be a partner with the Paynesville ACT on Alzheimer's committee and continues to support this work today.

Becoming "dementia-friendly" was no small feat. It included sessions with schools, church groups, businesses and community service groups to educate about dementia and how to interact with those who have dementia. It also included training for local police and first responders. The ultimate goal: to create an environment where people with Alzheimer's feel included and supported so they can stay independent longer.

The project was made possible by an \$18,000 grant from Minnesota ACT on Alzheimer's. From the get go, the community was engaged. The CentraCare team helped facilitate the kickoff meeting, where 90 people attended and shared their ideas, which helped set the direction for the work. This sparked creative solutions, including the idea to enlist volunteers who help people with dementia – or their caregivers – as they shop for groceries locally at Teal's Market.

DuDonne Andrie, community relations coordinator for CentraCare Health – Paynesville, serves on the ACT on Alzheimer's committee, and says this project has brought out the best in the people of Paynesville. "The way everyone has come together to support people with Alzheimer's in our community is inspiring and it shows just how much people care."

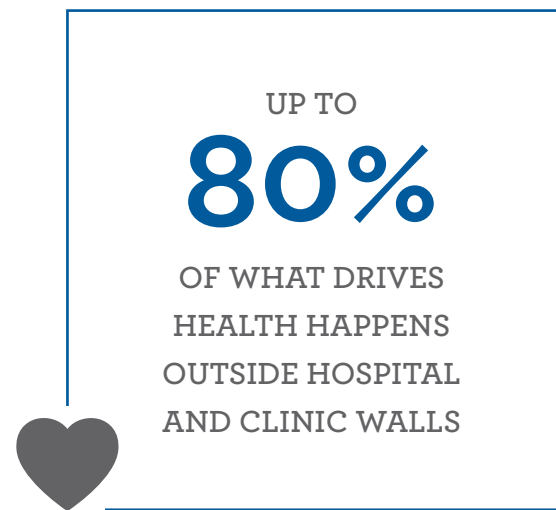
To learn more, visit: Actonalz.org/Paynesville

A photograph of children playing soccer on a grassy field. The image is split into two vertical panels. The left panel has a blue overlay and shows several children in red and blue jerseys running. The right panel shows a child in a blue jersey about to kick a soccer ball. The text 'FEELING GOOD MN' is overlaid on the left panel.

FEELING GOOD MN



Watch the video online at
CentraCare.com/2016



CentraCare Health aspires to be more than just Central Minnesota's preferred healthcare provider. Its goal is to be the catalyst that engages communities in health beyond CentraCare's network of hospitals and clinics. When you consider that up to 80 percent of what drives health happens outside hospital and clinic walls, this is a big opportunity.

This fall, the organization takes a big step toward this goal with the introduction of Feeling Good MN, an initiative powered by CentraCare Health. The purpose of Feeling Good MN is to make people in Central Minnesota healthy just by living here. This requires not only focusing on the importance of traditional wellness like nutrition and exercise, but also policies and community design that create a supportive environment for everyone.

Feeling Good MN builds on the success of programs like BLEND and Crave the Change, which have helped dramatically reduce childhood obesity rates among 12-year-olds and establish healthy tobacco-free environments throughout the region.

CentraCare created Feeling Good MN with input from community stakeholders and is fully funding the launch of the initiative. The long-term success of this effort will depend on the support of businesses and organizations that participate by giving their time, energy and financial support. Together we can make healthy choices easier, lower healthcare costs by reducing chronic diseases, and attract people to our communities.

In the next year, Feeling Good MN will introduce many new and exciting activities that encourage people to join in this movement. The effort will also be the focal point of a new partnership with KARE-11 TV, which will feature health and wellness information each month, starting in November. To receive updates about Feeling Good MN, or to find out how you can get involved, visit: FeelingGoodMN.org.



A BRIGHT FUTURE FOR LONG PRAIRIE



Watch the video online at
CentraCare.com/2016

ON AVERAGE
200
PEOPLE ATTEND
THE FARMERS
MARKET EVERY
FRIDAY



It's a new day in Long Prairie. This small community of 3,500 people has experienced its share of challenges over the years as poverty rates are high, more than 60 percent of school-aged children receive lunch support, and many families may not be able to access affordable, locally grown foods. But new partnerships between CentraCare Health and the community have residents feeling optimistic about the future.

A big part of that optimism comes from Dan Swenson, Administrator at CentraCare Health – Long Prairie. Swenson consistently and enthusiastically champions efforts aimed at improving the health of the community. If it's good for the community, Dan will find a way to make it happen.

One key partnership has been with BLEND, which enabled CentraCare Health – Long Prairie to pilot a Share Health project that gives 25 participants affected by hunger access to locally grown produce through “shares” in a community supported agriculture program (fresh produce is made available from Sprout, a local food hub). Through a grant from the SNAP-Ed Community Partnership Funding, BLEND also coordinated cooking classes and grocery store tours that emphasize the importance of healthy food preparation and smart shopping habits by using NuVal®, found in the local Coborn's grocery store.

So naturally, when the local farmer's market was struggling, CentraCare Health – Long Prairie, along with community members, rallied to revitalize it. Changes were made based on community input and today there are more vendors, more produce and more people. On average, 200 people attend the market every Friday.

Hundreds of community members are also engaged with Marnita's Table, which brings people together through “intentional social interactions.” These events invite people to share a meal and talk about issues facing the community. It's opened up a dialogue about health, but the biggest benefit is that people are coming together, socializing and really appreciating one another. For Swenson and the partners supporting these community efforts, this is what's most gratifying. And it's a big reason people are feeling good about the future in Long Prairie.



▶ Watch the video online at CentraCare.com/2016

PROJECT H.E.A.L. EXPANDS TO SAUK CENTRE

If you see CentraCare Health's Paul Knutson carrying a large STANLEY® toolbox, you know good things are about to happen in the community. No, Paul isn't a mechanic on his way to provide roadside assistance. He's actually a mission development specialist with CentraCare's Family Health Center where he helps coordinate a program called Project H.E.A.L. (Health, Education, Access, Link). This outreach program was started by Mid-Minnesota Family Medicine Center and helps bring free healthcare services to those in need.

You won't find any wrenches or sockets inside Paul's toolbox. Instead, it's stocked with blood pressure cuffs, thermometers, Band-Aids, a prescription pad and all the essentials needed to run a small clinic. By combining these "tools" with passionate partners and volunteers, CentraCare helps bring healthcare services to those most in need. There was a need identified in Sauk Centre, so Project H.E.A.L. opened its 9th clinic there in 2014.

Over the past 15 years, CentraCare has supported Project H.E.A.L. in many ways. In addition to providing the medical supplies, CentraCare teams up with churches and organizations across Central Minnesota to engage more than 80 volunteers who staff the clinics. Many CentraCare staff, including physicians, nurses and technicians, give their time to support the program,

as do physicians and providers from across the region. It's a true community-wide partnership.

Because of the community partnerships and enthusiastic volunteers, Project H.E.A.L. has had a tremendous positive impact. So far in 2016, volunteers have helped provide services to more than 500 people at its 10 locations, and more than 5,000 clinic visits have been logged since the program started. But as Knutson will tell you, there's still more to be done. And as long as there's a need, you can be sure Project H.E.A.L. will be around.

To learn more about Project H.E.A.L., visit:
CentraCare.com/services/project-heal



▶ Watch the video online at CentraCare.com/2016

BOUNCING BACK IN MONTICELLO

If you've ever received a handwritten thank you note or been on the receiving end of a random act of kindness, you know the power of positivity. Positive interactions can affect our mental health, happiness and overall well being. So when a group of Monticello Clinic and Buffalo Clinic providers experienced an emotional and challenging time following the tragic deaths of two colleagues, they came together in the spirit of positive thinking. This led to the creation of the Bounce Back Project, a community-wide effort that is instilling a new resilience among people living in Monticello and surrounding communities.

The purpose of Bounce Back is simple – to promote health through happiness. Today, the project is a partnership of CentraCare Health – Monticello, Allina Health – Buffalo Hospital, Monticello Clinic, Buffalo Clinic and Allina Health Buffalo Clinic. Together these organizations are introducing tools that can help people increase their resiliency and well being.

The CentraCare Health Foundation supports the efforts in Monticello with grant funding that has allowed for a dedicated Bounce Back Project point person to spearhead the effort. Melissa Pribyl, MSN, community health and wellness specialist, leads a 6-person multi-disciplinary team comprised of providers, clinical and non-clinical staff at CentraCare Health – Monticello. She helps introduce tools that strengthen mental health stamina

and overall well being through community presentations, showcase events, and healthcare related fairs.

The Bounce Back Project has exceeded expectations. The response from people in Monticello and Buffalo, and more recently surrounding cities and counties, has been overwhelmingly positive. More than 6,000 people have participated in the project, which helps people deal with situations when life does not go as planned. By working together, this program is showing that resiliency is real, and it can lead to improved physical and mental health and provide a strong and healthy response to change.

To learn more, visit: BounceBackProject.org



Photo by Dan Stephenson via sctimes.com

▶ Watch the video online at CentraCare.com/2016

PROJECT BRAINSAFE: COLLABORATING ON CONCUSSIONS

CentraCare Health's Dr. Kelly Collins grew up in an active, athletic family in Sartell. Remarkably, her four brothers all went on to play professional sports in the NHL and NFL. However, three of them had their dreams of going from small town Minnesota to the big leagues cut short by injuries, including concussions. And it was here where Dr. Collins' work as a physical medicine and rehabilitation specialist became very personal.

It was hard to see her seemingly invincible brothers experience struggles associated with concussions. Yet as an expert in neurological rehabilitation, which studies how the brain heals, Dr. Collins felt fortunate to be able to do something about it. In addition to helping her brothers, she channeled her energy toward helping others through her involvement in Project BrainSafe, a community collaboration that brings together medical experts, academic institutions and community partners to improve the standard of care for concussions.

Project BrainSafe is supported by CentraCare, and dozens of staff give their time and talents to raise awareness and educate people about concussions. "Fortunately, more people are aware of the seriousness of concussions today – especially in sports," says Dr. Collins. Project BrainSafe partners with schools to conduct baseline cognitive testing for student athletes, which can be used to diagnose and treat concussions.

But athletes aren't the only people susceptible to brain injuries. The elderly population, which is at a greater risk for falls, actually makes up the largest number of patients treated by Dr. Collins. "Our commitment is to provide treatment and resources so that everyone can reach their best potential, from babies to elders," says Dr. Collins.

Dr. Collins is proud of CentraCare's involvement in Project BrainSafe. "It's inspiring to see so many community resources come together to address this important need. I'm so thankful to CentraCare's leaders for supporting this work and to the Project BrainSafe team whose commitment is like nothing I've seen before. Together, we're improving lives every day."

Learn more at: BrainSafeMN.com



▶ Watch the video online at CentraCare.com/2016

MAKING A DIFFERENCE IN MELROSE

If you want to see a strong partnership between a community and a healthcare organization, look no further than Melrose. For years, this community has been actively engaged in health, and CentraCare Health has been there every step of the journey. This partnership continues to get stronger as CentraCare is planning to build a new \$25 million medical campus that will serve the growing needs of the area.

While the new medical campus will be a very visible place in the community where people can access healthcare services, there are some extraordinary healthcare outreach efforts taking place that are less noticeable, but equally important. Like the expansion of CentraCare's Community Health Worker (CHW) program to Melrose, which brings health care services directly to people in need through in-home appointments and check-ins. The expansion was made possible through a grant from the Minnesota Department of Health.

Jonathan Walz was hired as CentraCare's third CHW (the other two CHWs are based in St. Cloud). His job: to help address the growing concerns related to managing and treating diabetes among the Latino population in Melrose.

To do this Jonathan meets with patients on a regular basis to help them follow medication protocols, monitor glucose levels and ultimately manage their diabetes more effectively.

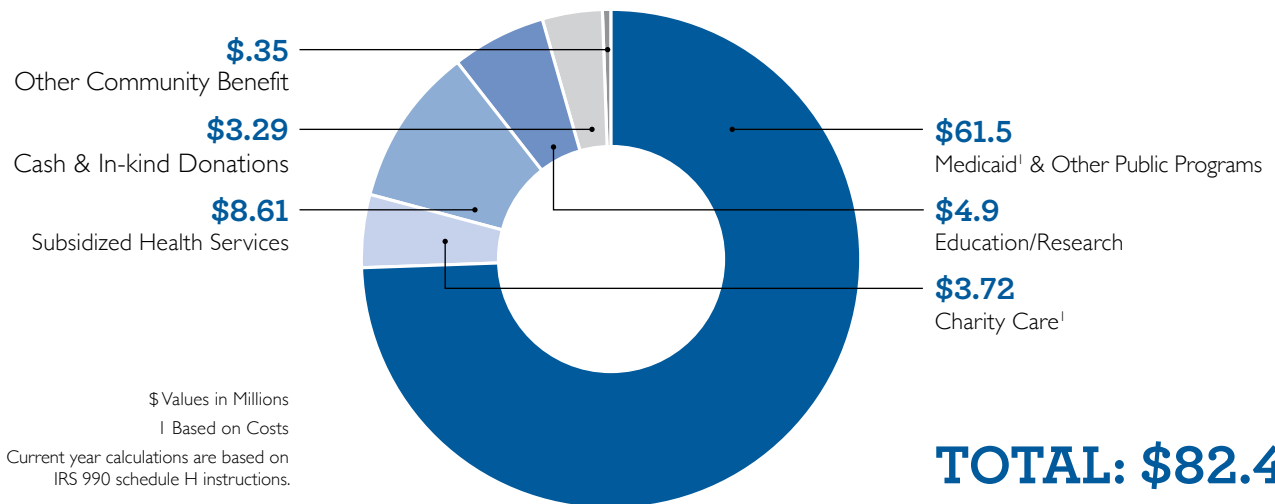
Jonathan has only been in this role since September 2015, but he's already viewed as a lifeline for the 50 patients he supports who rely on him for answers to questions and assistance with navigating the healthcare system. In several instances, through these home visits, he has been able to address issues before they become more serious.

Through this outreach program, Jonathan is not only helping people get the right care at the right time. He's building relationships, trust and helping foster a sense of community, which is what health is all about.

SERVING OUR COMMUNITIES

\$173,329,717

Total Value of Community Contributions



ADDITIONAL COMMUNITY BENEFIT² (in millions)

Cost in excess of Medicare payments	\$63.75	Discounts offered to uninsured patients	\$6.12
Other care provided without compensation	\$18.78	Taxes and fees	\$2.29

TOTAL: \$90.92

² Not included on schedule H

CENTRACARE HEALTH FINANCIALS

STATE OF OPERATIONS

For the years ended June 30, 2015 and 2016

	2016	2015
Total Revenue	\$1,199,650,818	\$1,138,072,280
Total Expenses	\$1,149,308,257	\$1,074,823,077
Net Operating Income	\$50,342,561	\$63,249,203
Operating Margin	4.20%	5.56%
Annual Capital Expenditures	\$88,200,516	\$74,236,936

BALANCE SHEET

For the years ended June 30, 2015 and 2016

	2016	2015
ASSETS		
Current Assets	\$336,984,469	\$279,762,842
Restricted Assets	\$533,588,496	\$576,621,298
Property, Plant & Equipment	\$656,269,063	\$627,608,165
Other Assets	\$30,717,478	\$33,394,611
Total Assets	\$1,557,559,506	\$1,517,386,916
LIABILITIES		
Current Liabilities	\$167,177,063	\$146,446,199
Long-Term Debt	\$455,588,549	\$411,172,165
Other Liabilities	\$99,136,659	\$85,282,208
Total Liabilities	\$721,902,271	\$642,900,572
NET ASSETS	\$835,657,235	\$874,486,344
Total Liabilities & Net Assets	\$1,557,559,506	\$1,517,386,916



CENTRACARE HEALTH FACILITY LOCATIONS

Albany - clinic

Alexandria - dialysis, radiation oncology

Becker - clinic, pharmacy

Belgrade - clinic

Big Lake - clinic, dialysis

Brainerd - dialysis

Cambridge - dialysis

Cold Spring - clinic

Eagle Bend - clinic

Eden Valley - clinic

Litchfield - dialysis

Little Falls - dialysis, outreach clinic

Long Prairie - hospital, clinic, senior housing,
long-term care

Melrose - hospital, clinic, senior housing,
long-term care

Monticello - hospital, clinic, senior housing,
long-term care

Paynesville - hospital, clinic, senior housing,
long-term care

Princeton - dialysis

Richmond - clinic

Sauk Centre - hospital, clinic, senior
housing, long-term care

Staples - dialysis

St. Cloud - hospital, clinic, dialysis, pharmacy,
senior housing, long-term care

St. Joseph - clinic



MISSION

CentraCare Health Foundation engages the philanthropic community in partnerships to improve health and health care.

THANK YOU

We hope you enjoy the stories in this year's Community Report, which highlight the connection between the CentraCare Health Foundation and our communities. As you read about the many different ways we support health, we also hope you feel as proud as we do about the impact we're having on people living in Central Minnesota.

Our efforts support wellness initiatives, community engagement programs, facility expansions and care for the poor; just to name a few. All of it is important work, but none of it would be possible without your generosity.

I am inspired by the commitment to CentraCare that we've felt from people across the region, and I thank you for your incredible contributions. It's because of you that we are able to improve and change lives every day.

Regards,

Brad Konkler
Vice President, Philanthropy & Community Health

CENTRACARE Health Foundation

CENTRACARE FOUNDATION BOARD OF DIRECTORS

Douglas J. Boser
Craig Broman
Paul Dorsher, MD
Julie Esselman
Andy Fritz
Christy Gilleland, *Chair*
Janet Handrigan, MD
Brad Hanson
Elizabeth Hayden

Ken Holmen, MD
Jean Juenemann, OSB
Brad Konkler
Mark Kranz
Yvonne Kremers
Elaina Lee, MD
Mary Linnemann
Carmie Mick
Pam Raden

Nicholas Reuter, MD
David Smith, MD
Kevin Smith, MD
David Tilstra, MD
Deb Vogt
Gene Windfeldt
Rose Windschitl
Diane Wojtanowicz



WAYS TO GIVE

There are many ways to support the needs of the community through the CentraCare Health Foundation. Here are examples of a few unique and creative ways people have chosen to give:



Gracie's Run



Nemeth Family Playroom



Pat Lynch—Granite Logistics



Gary Marsden—Karlie's Fund

REAL ESTATE GIFTS

Did you know there are tax benefits for donating real estate to the CentraCare Health Foundation? A real estate gift leaves a lasting legacy that supports programs and services of your choice while providing you a charitable tax benefit for the value of the property. The CentraCare Health Foundation recently received two real estate gifts (both buildings in St. Cloud), one from Dr. Michael and Kendra Flanagan and another from William and Karen Young. The Foundation created two funds with the value of the properties:

- The Flanagan Family Fund helps patients served by Gorecki Guest House, Recovery Plus and St. Cloud Hospital's Family Birthing Unit
- The Granite City Dental Lab—William and Karen Young Fund helps patients and families served by Coborn Cancer Center and Clara's House.

DONATIONS FOR NEW AMENITIES

Years ago, when Dr. Ben and Kari Nemeth gave birth to their twin boys at St. Cloud Hospital, there wasn't a place for their older son to play. This inspired them to donate funds to create the Nemeth Family Playroom, which today is a special place designed just for kids. The Nemeth family initially donated \$25,000 to create the playroom and recently donated another \$25,000 that was used to refurbish and restock it with new child-friendly interactive tools. The playroom has become an important part of the pediatrics unit and is a favorite space for visiting kids as well as siblings of children who are being cared for at St. Cloud Hospital.

MATCHING FUNDS

When Pat Lynch, President of Granite Logistics, learned that CentraCare Health was considering new and innovative ways to help heart and vascular patients, he wanted to help. So Pat's team at Granite Logistics generously matched \$100,000 in donations during CentraCare Health Foundation's 2015 Community Campaign, which are benefiting the CentraCare Heart & Vascular Center.

Today, the funds are being used for services that insurance doesn't cover, such as iPads for remote monitoring for heart failure patients, as well as routine depression and anxiety screenings for heart and vascular patients.

"We believe in CentraCare, which is so vital to Central Minnesota," said Lynch. "We're honored to support their work in a way that benefits people living in our communities."

PERSONAL FUNDRAISERS

Gary Marsden recently organized a cribbage tournament to benefit Karlie's Fund for Reach Out & Read, a program that provides books to young children in hopes of encouraging reading. Marsden gathered his fishing friends for an evening of cards and cribbage, which raised \$5,250 that was donated to help offset the cost of purchasing books. Through the program, books are given to children, ages 6 months to 5 years, by CentraCare Clinic's pediatric providers during every well-child clinic visit.

Karlie's Fund for Reach Out & Read was established by Karlie Geiser Hobson's family after her tragic death in a car accident in 2012. To learn more, or to make a donation to Karlie's Fund For Reach Out & Read, visit: [CentraCare.ThankYou4Caring.org/pages/karlies_fund](https://www.centracare.com/ThankYou4Caring.org/pages/karlies_fund)



▶ Watch the video online at CentraCare.com/2016

A CENTER FOR CANCER SURVIVORS

For people living in Central Minnesota, it's encouraging to know there are more than 7,000 cancer survivors who have received treatment and support from CentraCare Coborn Cancer Center. And it's exciting to know there are plans to develop a new facility that will offer everything patients and family members need once cancer treatment is complete.

"It can be emotionally difficult for patients to come back to the Cancer Center for supportive services after they have received treatment," said Sonya Wieber, section director at Coborn Cancer Center. "This is why the new center will be built adjacent to, but separate from, the Cancer Center. We're also excited to partner with the community in ways that will make this center a model for other cancer treatment programs across the country."

One example is the Expressive Arts Program, which will be a partnership with local art students who earn college credits by helping facilitate art classes for patients, family members and even caregivers. This allows participants to express their emotions and experiences through art, which has proven therapeutic benefits. The center will also offer nutrition counseling and dietary programs, as well as integrative therapy programs, like yoga designed especially for cancer patients.

The CentraCare Health Foundation is leading a capital campaign that will help make this dream a reality. The Coborn Family Foundation generously donated \$1 million to start the campaign, which has a goal of \$3.2 million (the facility will be 100% donor funded). Once the capital campaign goal is reached, construction will begin. The goal is to complete fundraising efforts by Spring 2017 so the new center can open in late 2017.

To learn more, or to make a gift, visit: CentraCare.com/foundation/areas-of-need/cancer-survivorship-center



▶ Watch the video online at CentraCare.com/2016

RUNNING THE STREETS OF ST. CLOUD

While spring in Minnesota can bring unpredictable weather, one thing you can count on every April is a crowd of enthusiastic participants ready to take part in the Earth Day Run Weekend activities. This year was no different as more than 4,000 runners and walkers packed the streets of St. Cloud, making it one of the biggest race weekends in the event's history. CentraCare Health led the planning for this annual event and excitement is already building for next year.

The Earth Day Run attracts people from across the region and is Central Minnesota's largest road race featuring a half marathon, half marathon relay, 5K run/walk and 1K kids run. This year, the weekend had a special focus on kids with separate field trip experiences for area 3rd graders and all 17 area Boys and Girls Club/KIDSTOP sites. Through this, more than 1,600 kids learned about healthy activities and capped off the experience running their own 1K race.

It was a remarkable weekend, and it was successful because of the community teamwork that took place before, during and after the event. "Our volunteers were amazing," said Bartt Gevens, race director. "So many people stepped up to help, and that's what made the weekend really special for participants and spectators." More than 1,200 volunteers pitched in starting early Thursday morning until late Saturday night to make the event a smooth-running success.

The City of St. Cloud was a tremendous partner, helping with course planning and street preparations. The Parks & Recreation department made it possible to highlight some of the city's most beautiful green spaces. Local police played a huge role both days to ensure the safety of participants as well as spectators, and St. Cloud State University played a major role as the course weaved through campus and finished inside Husky Stadium.

It was an exhilarating weekend for everyone involved, and CentraCare will again be leading the event in 2017 – one that is expected to be even bigger and better.

To learn more, visit: RunEarthDay.com

HEALTH GAIN FY2016

REGIONAL GRANTS

Regional Grants are vetted through a three-step process:

- STEP 1** The Foundation staff screens out requests not aligned with CentraCare Foundation's mission or invites a full proposal be submitted to the Grants Committee.
- STEP 2** Grants Committee reviews.
- STEP 3** Full Foundation Board approval. Over the Foundation history, 475+ grant requests have been reviewed by the Committee and the Board has approved 297. The Grants Committee is looking for the best fit with the Foundation's mission of improving health and health care. Below are examples of the grants distributed:

Confidence Learning Center—Get FIT MN: A Health & Wellness Program for Individuals with Disabilities

Central MN Mental Health Center—St. Cloud Area Child Response Initiative

Lutheran Social Service—St. Cloud Area Crisis Nursery

Children's Dental Services: Portable dental care to 1,000 low-income Central MN children and pregnant women

Catholic Charities—Youth House Outreach

Faith's Lodge: Coping with the serious illness of a child

Minnesota Gerontological Society: Professional training in gerontological and geriatric principles

St. Cloud State University—Keep it Quiet: A file and outreach program around suicide

Todd County Health & Human Services—Todd County Senior Transportation

Goodwill-Easter Seals Minnesota—Mental Health Services, St. Cloud

Helping Hands Outreach for Elders, Inc.: Caregiver programming expansion and support

Employment Enterprises: Equipment upgrade for medically fragile individuals

Initiative Foundation: Early childhood dental network cavity free birth–3

True Friends—True Friends Health Services

Talahi Community School: Handicapped playground for Talahi Community School

Rivers of Hope—Domestic Violence and Child Protection Advocacy Project

MOST RECENT INNOVATIONS FUND INVESTMENTS THIS PAST FISCAL YEAR INCLUDED:

CentraCare Health Monticello—BounceBack Program: A collaboration between CentraCare Health – Monticello, Allina Health – Buffalo Hospital, Monticello Clinic, Buffalo Clinic and Allina Health Buffalo Clinic to provide community members with a variety of tools and programs that will help them build and strengthen their own resilience.

Read the full story on page 11.

Central Minnesota Concussion Collaborative (BrainSafe): Approval of a second year of funding for this community-wide initiative to improve the care for patients of all ages with concussions, also known as mild traumatic brain injuries.

Read the full story on page 12.

CentraCare Health—Long Prairie—Marnita's Table: A program to catalyze and connect key CentraCare Health—Long Prairie stakeholders to build intentional social interactions with the Latino community. Read the full story on page 9.

Feeling Good Minnesota: An initiative powered by CentraCare Health to support healthier communities by making healthy options automatic, affordable and accessible for everyone. Read the full story on page 7.

CENTRACARE HEALTH FOUNDATION FINANCIALS

SUMMARY OF OPERATIONS

	2016	2016
For fiscal year 2016		
	REVENUE & SUPPORT (in thousands)	EXPENSES (in thousands)
	Contributions, net*	Grants & Programs
	Investment Income, net	Special Events
	Special Events	Administrative
	Planned Giving Expectations**	Fundraising
	Total Revenue	Total Expenses
	\$10,670	\$8,807
		Net Assets at the end of the year
		\$50,881

* St. Cloud Hospital, CentraCare Health–Long Prairie and St. Benedict’s Senior Community covered a portion of the Foundation’s administrative expenses. The number is reflected in the contribution line.

** Some planned gifts are revocable and may not materialize.

DONORS

Thank you to everyone who generously supports health and health care in Central Minnesota. The lists of benefactors highlight the thousands of people in our region whose gifts are impacting the care of patients today, leaving a legacy of future health improvements.

CUMULATIVE BENEFACTORS

The persons, foundations and corporations listed have achieved a lifetime-giving level of \$10,000 or more. We truly are grateful to our benefactors and make every effort to list them as they prefer. Please call 320-240-2810 to correct any errors or discrepancies that appear in the following lists. (As of June 30, 2016)

\$2,000,000+

CentraCare Health Employees
Clearway Minnesota
The Coborn Family
Ms. Mae Ellingson-Skalicky
Benedict F. (+) & Dorothy J. Gorecki
St. Cloud Hospital
St. Cloud Hospital Volunteer Auxiliary
John & Mary Weitzel

\$1,000,000+

Anderson Family of Companies
Bob & Linda Feuling & The Feuling Family
Rollie & Barbara A. Anderson
Rose Mary (+) & Darwin Bonn
Grocers On the Green
State of Minnesota
George & Shirley Torrey

\$750,000+

Douglas J. & Tanya Boser–
Boser Construction, Inc.
Marco, Inc.
The Kresge Foundation

\$500,000+

American Foods Group, LLC
Blue Cross and Blue Shield of MN
Crothall Services Group
Bob & Nancy Ferche Family
Barb & Art Grachek
Long Prairie Packing

Patrick E. Lynch
McGough Construction Company, Inc.
Morgan Family Foundation
Otto Bremer Trust
The Rosen Family Foundation, Inc.–
Lud, Roberta & Thomas Rosen
Bob & Sandy Sexton
Dr. Wesley J. & Jean A. (+) Streed
Gene & Sheelah Windfeldt

\$250,000+

Bernick Family Foundation
Scott & Kim Blattner
Central Bi-Products
Design Electric, Inc.
Lester Engel
Farmers Union Industries, LLC
Dr. Michael C. & Kendra Flanagan
Andy & Jodi Fritz–El-Jay
Plumbing & Heating, Inc.
John & Nancy Frobenius
Lee & Jan Hanson
Harold E. Anderson Trust
Al & Yvonne Kremers

Leighton Broadcasting Radio Stations–
KCLD, KZPK, KCML, KNSI
John Mahowald & Donna Kuhl
Mahowald Insurance Agency
Gary & Jane Marsden
Dr. John & Joyce Matsuura
John & Cherie McDowall–
McDowall Co.
Medica Foundation
Dr. Terence & Sue Pladson
The Clara Foundation
Patrick J. & Karen L. Virnig
Wells Fargo Bank
William & Karen Young–
Granite City Dental Lab
Dennis & Karen Zaub

\$100,000+

American Heritage Bank & The Jay
Johnston & Rodger Johnston families
Barb Anderson & Dave Chandler
Arvig Communication Systems
Cornelius P. & Sandra L. Baldwin
Michael & Sharon Bauerly Family Fund

Bauerly Companies
 Rodger & Marlys Bense
 Dick & Mimi Bitzan
 Bremer Bank
 Craig & Karen Broman
 The Carlson Family &
 C & L Distributing
 Central MN Emergency Physicians
 James C. Christensen
 City of Melrose
 Melrose Public Utilities Commission
 CliftonLarsonAllen
 Dan's Prize, Inc.
 Donlar Construction
 Dr. Paul J. & Joanne E. Dorsher
 Roger & Betty Duininck
 Epic Systems
 Merle & Kathy Felling
 Felling Trailers
 Jared Gapinski & Molly Meagher
 GNP Company—Gold'n Plump
 Gray Plant Mooty
 Leo T. Henkemeyer
 Emily Hoefl Estate
 Kevin J. & Joanne M. Hughes
 Hughes Mathews Greer, P.A.
 Dwight & Audrey Jaeger
 Jim Christensen—
 J.C. Christensen & Associates, Inc.
 Sy & Corrine Janochoski—Sy & Sons, Inc.
 Kempes
 Knife River/MDU Foundation
 Cheryl Lightle & Wade Skaja
 Thomas E. & Mary Mathews
 Gordy & Michelle Meyer
 Dan & Susan Miller—
 Miller Architects & Builders
 Jim & Marion Miller
 Dr. Paul T. & Nancy (+) Moran
 Multiple Concepts Interiors
 Carpet One
 Pan-O-Gold Baking Co.
 Regional Diagnostic Radiology
 Dr. Nicholas & Bernice Reuter
 Barry & Sandy Ross
 Phil & Evelyn Ruggiero
 Leo M. & Karen M. Sand
 Scheels All Sports
 Joyce A. & Thomas L. Schlough
 Ronald S. & Irene E. Schmidt
 SEI
 Christopher Shorba
 Sprint PCS
 St. Cloud Ear Nose & Throat—
 Head & Neck Clinic, PA
 St. Cloud Hospital Auxiliary Gift Gallery
 St. Cloud Lions Club
 St. Jude Medical
 Tastefully Simple
 Esther & Jerome (+) Then
 Dr. Tracey B. Thompson
 Delphine (+) & John
 Undersander Family
 US Bank
 Paul E. Van Gorp, MD &
 Roberta Knutson
 Faber Family—Viking Coca-Cola,
 First Choice, Armada Coffee
 Bob & Penny White
 Wolters Kluwer Financial Services

Diane & John (+) Wojtanowicz/
 Prairie Farm Company

\$75,000+

Gail Anderson
 Audio Video Extremes, LLC
 Vonnie Bangtson
 Carl & Barb Caspers
 Child Care Choices, Inc.
 Crafts Direct
 Crystal Farms
 Dr. Luther (+) & K. Julie Aronson Dehnel
 Rich & Jodi Erkens
 Fraternal Order of Eagles
 Ken & Deb Gieske
 Greater MN Fight for a Cure
 Judge Elizabeth Hayden &
 Judge Charles Flinn, Jr.
 HealthPartners Central
 Minnesota Clinics
 Donald Helgeson & Sue Shepard
 J & B Group
 Jennie-O Turkey Store, Inc.
 The Jay Johnston Family
 The Rodger Johnston Family
 Drs. Richard & Merryn R. Jolkovsky
 Lamar Outdoor Advertising
 William A. & Virginia M. Lee
 Jim Nahan
 Rice Building Systems, Inc.
 Denny & Karol Ringsmuth
 Rinke Noonan, Ltd
 Russ Davis Wholesale
 Sisters of the Order of Saint Benedict
 Don & Sylvia Weeres & Family—
 Spee-Dee Delivery Service, Inc.
 Sysco Western Minnesota
 The Lynn Johnson Family Foundation
 Louise E. Theisen
 Then Family Charitable Foundation
 Vascular Solutions
 Gary & Wendy Verkinnes

\$50,000+

Array Services Group
 John, Nancy, Corey & Lee Bartlett—
 Automotive Parts Headquarters, Inc.
 Charles D. Nielsen & Peggy L. Carlson
 John P. & Cindy B. Clemens
 Robert & Veronica Coborn
 Family Fund
 Coldspring
 Courier Investments, LLC.
 Dr. & Mrs. Stephen Cragle
 Creative Memories/The Antioch Co.
 DeZurik
 Mark & Karla Donlin Family Fund
 Charles & Jane Dooley
 The Eich Family & Eich Motor Company
 Dr. Walter N. & Trecia Ann Ellis
 Michael J. Faber
 Rose Ann Faber
 Form A Feed, Inc.
 Dr. John H. & Jeanne M. Geiser
 Christy Gilleland—
 Gilleland Chevrolet-Cadillac
 Ross Hall & Tanya Vossberg
 Hammel, Green & Abrahamson, Inc.
 Dennis & Tamara Holland
 Allen & Laura Horn

Mary Lee & James H. Illies
 J.P. Morgan Securities, Inc.
 Mary Lou Jameson
 Karen & Jerry Jurgens
 Donlar Construction Company
 The Klick Foundation
 Sue & Greg Klugherz
 Linus (+) & Marina Koopmeiners
 Jim & Mary Jane Lauerman
 Steven Letnes
 Hub Levandowski & Karol Moorman
 John P. & Maryanne Mahowald
 Steve & Trese Mareck
 Margaret Burke Trust
 Dr. Edward & William Martin-Chaffee
 Mathew Hall Lumber Company
 Metropolitan Mechanical
 Contractors, Inc.
 MHA
 Midsota Plastic & Reconstructive
 Surgeons, PA
 Dr. Chris & Denise Moellentine
 Minnesota Academy of
 Pediatrics Foundation
 John & Helen Monson
 Michael R. & Donna M. Nathe
 Ben & Kari Nemeth
 New Flyer USA
 Robert & Marilyn Obermiller
 Option Care
 PCL Construction Services, Inc.
 Danya Rice
 Michael & Elizabeth Roth
 Will & Jill Seiler
 Michael & Patricia Sipe
 St. Cloud School of Nursing
 Alumni Association
 Stearns Benton Medical Society
 Don & Angeline Hall Family
 Stinson Leonard Street LLP
 Supervalu, Inc.
 Daniel & Susan Swenson
 Kathy & Tom Terhaar
 The Hearst Foundations
 Tony & Joyce Tillemans
 Drs. David & Janet Tilstra
 TKI/Tom & Diane Kraemer Family
 Traumen Glasberg Design Studios
 Brad & Kathy Wheelock
 Dr. Daniel & Judy Whitlock
 Duane & Elaine Schultz &
 Winkelman Building Corporation
 Robert & RoseAnn Zinter

\$25,000+

Janie & Jack M. Amundson
 Matt Hwang & Stacia Anderson
 Janet & Dr. Charles Andres
 Anheuser-Busch
 Arvig
 Larry L. Asplin
 BankVista
 Joan B. Volkmoth
 Roberta & Kevin Basol
 David & Jean Bauerly Family
 Jerry & Elaine Bauerly
 Don & Pat (+) Bitzan
 Payton Blomstrom Perinatal &
 Pediatrics Palliative Care Fund
 Joe & Patty Blonski

Bonnie & Stephen Bologna
 Tom & Andrea Brasel
 Bremer Financial Services, Inc.
 Dr. Frank T. & Alice L. Brown
 Laura Burns
 Bush Foundation
 Center For Diagnostic Imaging
 Central Minnesota Credit Union
 Central Minnesota Noon Optimist Club
 Linda & Joe Chmielewski
 Clearwater Travel Plaza
 Continental Press, Inc.
 Mick Family—Custom Welding &
 Metal Fabricating, Inc.
 D.J. Bitzan Jewelers
 Jim & Jan Davis
 DCI, Inc.
 Del Monte Foods
 Donlar Construction
 Dunham Associates
 Rene Eldidy, MD
 Elmer Garding Memorial Cancer Fund
 Janice & Charles Engebretson
 Dr. Fred J. & Lynn Engman
 Jason & Debra Erickson
 Perry L. Evans
 Events Extraordinaire By
 Jean, Inc./Jean Dotzler
 Fifth District Eagles
 Finken Water & Kay's Kitchen
 General Mills, Inc.
 Frank & Helen Gessell
 Granite Equity Partners Fund
 Patricia Gray
 Doug & Kay Greenlee
 James & Pauline Hall
 Donald & Nancy Hansen
 Drs. Ronald D. & Michelle Hanson
 Harley & Sally Hanson
 Paul & Jennifer Harris
 Dr. Richard W. & Patricia Hart
 Richard & Kris Inderieden—
 Heater Rental Services
 Dr. Pat & Juliann Heller
 Joe & Amy Hellie
 Kit & Jerry Henkemeyer
 Henkemeyer Coatings, Inc.—
 Mike & Pat Henkemeyer
 Steve & Megan Henkemeyer—
 Henkemeyer Excavating
 Joan Hicks
 Andy (+) & Carol Hilger
 Hogle Bus Co., Inc.
 Holiday Companies
 Holiday Inn Hotel & Suites
 Holiday Station Stores, Inc.
 Dr. Mark D. & Susie Osaki Holm
 Linda & Ken Holmen
 Ken & Beth Honkomp
 Nicholas & Terese Houle
 Dr. Scot & Gretchen Hutton
 Alcuin & Dorine (+) Illies
 Kathy Janson Memorial Fund
 JM Companies, Inc. & Mike Moores
 John Wiese Ford, Inc.
 Kevin & Julie Johnson—
 K. Johnson Const., Inc.
 Cynthia L. Johnson
 Dr. James L. & Mary Jost
 Dr. Donald J. Jurgens

Justin V. Pearson Memorial Fund
 Michael & Joni Karl
 Keller Family Community Foundation
 Kiwanis Club of St. Cloud
 Tom (+) & Helen Krebsbach
 Dr. David A. & Susan M. Kroska
 Laerdal Foundation
 Lakeland Construction Finance, LLC
 Steve & Peggy Laraway
 Mark & Judi Larkin
 Dr. Thomas W. & Deanne Leither
 Mike & Rhonda Lepinski
 Aaron & Jill Levin
 Dr. Douglas R. & Taimi T. Liepert
 Lions Club of Long Prairie
 Duane & Patricia Lorsung
 Jim & Vickie Lundeen
 Macy's
 Dr. Todd & Sarah Magnuson
 Jim & Chris Mahowald
 Norie Mahowald
 Mardag Foundation
 Dr. Mark & Ronda Matthias
 Scott & Mary Kay May
 Dr. Eric T. McFarling
 Dr. Lynn M. McFarling
 Medtronic
 Dr. Cindy Jensen Melloy &
 Thomas P. Melloy
 Melrose Lions Club
 Michael Foods
 Midwest Arrhythmia Research Fund
 Myrel A. Neumann Midwest
 Vision Centers
 MillerCoors
 Minnesota Medical Foundation
 Minnesota Power Foundation
 JM Companies, Inc. & Mike Moores
 Rosie & Roger Moran
 Morrison Healthcare Food Services
 Steve Muggli
 Mark & Jan Murphy
 NativeX
 Negen Family-Negen Architects, Inc.
 Dr. Robert B. & Marianne Nemeth
 Joshua & Melissa Longnecker-
 Northwestern Mutual
 Old Dutch Foods, Inc.
 Troy & Gail Olson
 Tom & Barb Orr
 Kurt & Linda Otto
 John & Elizabeth Packert/Ron's Cabinets
 Kathy Parsons
 Paynesville Hospital Auxiliary
 Perkins & Will
 David & Mary Phipps
 Patrick & Joy Plamann
 Plaza Park Bank
 Pleasureland RV Center, Inc.
 Pope Architects, Inc.
 Tom & Amy Porwoll
 Durand J. & Mary Sue Potter
 Preferred Credit, Inc.
 Prestige Parking & Valet
 Quinlivan & Hughes, P.A.
 Joni & Duane Rasmusson
 RBC Wealth Management
 Dr. John R. & Kathryn A. Reisinger
 Robert & Rita Rengel
 Dr. David J. & Susan M. Roberts

Al & Vickie Ruegemer
 Scenic Sign Corp.
 Dr. John M. & Amy Schmitz
 Claude C. & Mary A. Schneider
 John & Jan Schnettler
 Dr. Thomas G. & Myra Lee Schrup
 Jacqueline M. Schuh in memory of
 Joan M. Schuh
 John Seckinger
 Tom & Kathy Sellnow
 Sentra-Sota Sheet Metal, Inc.
 Slumberland Furniture of St. Cloud
 Kevin L. Smith, MD
 Dr. Stephen (+) & Mary Sommers
 St. Cloud Country Club
 St. Cloud Surgical Center
 Dr. Michael & Nina Steil
 Stellis Health, P.A.
 Scott & Shelly Streed
 Todd & Heidi Streed
 Stryker
 Dr. Muhammad Suri & Aqsa Nadeem
 Dr. Jessica & Andy Swartout
 Tenvoorde Ford
 The Klick Foundation
 The Medtronic Foundation
 Thermo-Tech Windows East Side
 Glass Company
 Lee & Mary Torborg
 Townsquare Media, Inc.
 Mark J. Traut
 Dr. Theodore & Andrea Truitt
 W. Gohman Construction Co.
 Donald R. & Jan D. Watkins
 Bruce & Jodie Gohmann-
 Weidner Plumbing & Heating
 West Central Anesthesia PC
 Hugo & Rita Weyrens
 Dr. Darin D. & Katy Willardsen
 William & Betty Andres Foundation
 Williams Dingmann Funeral Homes
 Brownie & Michelle Williams
 Dr. Harold E. & Shirley Windschitl
 Xcel Energy
 Dr. Mohamed S. Yassin
 Todd & Kyoko Zaun
 Daryl L. & Bonnie G. Zimmer
 Sonja Zitur
 Zonta Club of St. Cloud

\$10,000+

Linda Abel
 The Ackley Family
 Acosta
 Adult & Pediatric Urology
 Advantage One Insurance-
 J. Ted Plombon
 Advantage Sales & Marketing
 AIS Planning
 Dr. Oluade A. & Adeyoola A. Ajayi
 Albany Mutual Telephone Foundation
 Hani Alkhatib
 Tom & Sally Allen
 Allergy, Asthma & Pulmonary Assoc., P.A.
 American Cancer Society
 American Door Works
 American Endowment Foundation
 American Pharmacists Association
 John & Kay Delinsky &
 Apollo Insurance Agency

Brent & Ingrid Anderson
 Arbor Research Collaborative
 for Health
 Arctic Glacier Ice
 Ascent
 AVI SPL
 Christine & Jason Bakke
 Dr. Burton R. & Evelyn H. Bancroft
 Barnes & Noble Booksellers
 Barrel O' Fun
 Patrick C. Bauer & Gloria A. Flavin Bauer
 Brian & Marge Bauerly
 Jennifer & Jake Bauerly
 Mark & Anita Bauerly
 Rick & Helga Bauerly
 Bayer Built Woodworks, Inc.
 Penny & Dennis Beattie
 Gary & Kay Bechtold
 Mary Bell
 Carol Belling
 Michael S. & Gerry Beltinck
 BerganKDV
 Ernest J. (+) & Eileen A. Bergeron
 Dean R. & Lori J. Bernick
 Kirstie & Peter Bingham
 Ryan & Julia Bjerke
 Big Stone County Cancer
 Support Group, Inc.
 Byron & PegAnne Bjorklund Family
 Rona Bleess
 Drs. Barbara J. & Steven H. Bollinger
 Bor-Son Construction, Inc.
 Sharon & David Borgert
 Dr. Philip F. & Kristine Boyle
 Joe & Kathy Sexton
 William & Louise Brandt
 Robert & Bernice Braun family
 Breitbach Construction Co.
 Dennis & Merrie Breitenfeldt
 Dr. Bryan J. & Kirsten H. Brindley
 Daniel & Teri Brooks
 Sonia Browen
 Gary & Sharon Brown & family
 Barbara DuBois Carlson
 Dr. Dennis & Jeanne Carreras
 Carson Pirie Scott Foundation
 Brown & Krueger, PA
 Mary Buhl
 Barbara & David Burandt
 Mary Bye
 Roger & Sue Cada
 Sheila Campbell
 Care Transportation
 Caribou Coffee
 Cathedral Press
 Central Minnesota Credit Union
 Central Minnesota Diagnostic, Inc.
 Central Minnesota Woodcarvers Assoc.
 Certified Hereford Beef
 Charity Cup Ride
 Del & Colleen Christianson
 City of St. Cloud
 College of Saint Benedict
 Dr. Thomas & Paulette Como
 Adeline Conlon
 Dee Coppock
 Cornerstone
 Dr. Thomas L. & Mary M. Cress
 Crossmark/Reckitt Benckiser
 Crow Wing County Auditor-Treasurer

Pat Cumming
 Craig & Lynn Dahl
 Dahlheimer Beverage, LLC
 Daniel Funeral Home, Inc.
 Dr. Eileen H. & Brian H. Dauer
 Dayton Foundation
 Dr. Amy & Eric Dearing
 Fred & Judy Dinkel & Family
 DLMC Foundation
 Cindy & Dwayne Dockendorf
 Larry & Rita Donlin
 Donlin Company
 Dr. & Mrs. Michael J. Dorle
 Dr. Craig M. & Jennifer Doschadis
 Jyeton Dryana
 Dr. Ann C. Dunnigan
 Drs. Robert Ang & Belen Dy
 East West Realty
 Eden Valley Lions Club
 Edy's Grand Ice Cream
 Dr. Charles Ehlen
 Mike & Deb Eisenstadt
 Dr. Dahlia Elkadi
 Energizer
 Dr. Hans H. & Sharon L. Engman
 Wayne R. & Linda J. Engstrand
 Robert & Evelyn Erickson
 Fairview Gardens
 John & Gail Falconer
 Family Voices of Minnesota
 Dr. Kelly B. & Neil Fandel
 Farmers & Merchants State Bank,
 Sauk Rapids/Pierz
 Tom & Gina Feldhege
 Jason & Jennifer Ferche
 Fifth Avenue Sleep Center
 First State Bank
 Michele Fischer
 Jim Forsting
 Freeport State Bank
 Frito Lay
 Dick & Lucy Fuchs Family
 G.R. Herberger's, Inc.
 Bernard J. Gambirino
 Gannett National Shared
 Service Center
 Chanda & Eric Gebhardt
 General Mills Foundation
 Ceree George
 Drs. Terri T. & Jeffrey S. Gerdes
 Jodi & Chad Gertken
 Gerry & Debora Gilbertson
 GLTArchitects
 John & Arlene Glynn
 Great River Federal Credit Union
 Greater St. Cloud Development Co.
 Dr. Winn & Denise Gregory
 Pete & Paulette Hagen
 Dr. Albert S. & Janice Hammond
 Hanratty & Associates, Inc.
 Craig & Joan Hanson
 Paul N. & Michele Hanson
 Chad A. Haroldson
 Angelyn Harper
 Mark Hauge
 Dennis & Jacquelyn Heinen
 Todd & Jodi Hillmer
 Kacey Hiltner
 Dr. Kathleen Hobday
 Holdingford Area Walk of Hope

Hormel Foods
Drs. Weining Hu & Yi Zheng
Dr. Mark Hughes
Brenda & Matt Hulst
Imagine Nation Books, LTD
Ingram Entertainment, Inc.
Initiative Foundation
Dan Janochoski
Jim Janochoski
Mr. & Mrs. Tom Janochoski
John Morrell & Co.
Dr. Craig M. & LuAnne Johnson
Bob & Judy Johnson
Angela Jordahl
Angelica Jurgens
Audrey & Dave Kamphenkel
Kane Transport
Terry & Barb Kantor
Dr. Barbi Kaplan-Frenkel &
Theodor Frenkel
Linda Kappel
Mary Lou Kasella
Dale & Marie Katterhagen
Dale Kaufman
Drs. Mary & Jerry Keating
Rob & Joanne Keck
Kehe Food Distributors, Inc.
June Kelly
Kemps
Kemps, LLC
Karen Kinsley
KLN Family Brands
James M. & Janet Knobloch
Luan Knoll
Larry & Brenda Knutson
Kopp Family Foundation
Kopp Investment Advisors
Dr. Todd M. & Laura Kor
Naomi Kowalik
Kraemer Lumber Co., Inc.
Kraft Foods
Amy Kramer
Mark Krebsbach
Rebecca Kulzer
Greg & Carla Kummer
Ron Kurpiers, Sue Albeck &
Jo DeBruycker
Dr. Barry A. & Leslie Labine
Dr. John M. & Nancy Lacika
William J. & Phyllis M. Lacroix
Jerry & Bev Timmers Lahr
Aaron & Lisa Lahr Family
Dr. Patrick M. & Debra S. Lalley
Patricia & Henri Lanctin
Land O' Frost, Inc.
Peggy Lange
Steve & Martha Lanz
David Larson
Dr. Theresa M. & John Lau
Marie Laudon
Dr. Elaine Lee & Steven E. Patterson
Yvonne L. Leedahl
Dr. Danielle & Michael Leighton
Leighton Interactive
John & Arlene Leisen
Dr. Girum Lemma & Wuby Akalu
Scott & Lori Leonard
Mary J. Leyk
Deb Libbesmeier
Dr. David & Gretchen Lindgren

Bonnie & Richard Line
Little Falls Orthopedics
Shirley & Al (+) Loehr
Joan & Paul Lombardi
Long Prairie Plumbing & Heating, Inc.
Phil & Holly Luitjens
Lumber One, Avon, Inc.
Dr. John Teskey & Kathleen Mahon
Marjorie & Gerald Mahon
Robert L. & Anne M. Mahowald
Samuel G. & JoAnn M. Mairs
Richard P. & JoAnn C. Manlove
Diane L. Marcotte
Nancy & Erich Martens
Bonnie Martin
Dr. Creston M. Martin
Mary Martin
Dr. Mark J. & Lisa B. Martone
John & Dorothy Matthews
Eileen Maus
McGladrey LLP
Vivian & Lewis McGonagle–
Ickler Bearing & Machine Co.
McGough–St. Cloud
McKay's Family Dodge, Inc.
Melrose Electric, Inc.
Darla & Brian Mergen
Merrill Corporation
Metro Anesthesia Consultants, PA–
Drs. Brian & Susanne Rupert
John Meyer
Roy J. & Ruth Meyer
Douglas & Jane Mick
Mid Central Door Co.
Mid-America Coffee Service/
Ronnoco Coffee
Alvina Mies
Dennis Miley
Debra Miller
Dr. Simon & Renee Milstein
Minnesota National Bank–Long Prairie
Minnesota National Bank–Sauk Centre
Andre' Mitchell
Kathryn Morin
Mortenson Construction
Roger A. & Barbara L. Moshier
Mr. Dee's, Inc.
Gwen Muehring
Beverly Mueller
Musco Family Olive Co.
Name Brand Wigs
Tracy E. Napp, M.D.
Dr. Frank P. & Tracy Nellans
Dr. Peter E. & Laurie Nelson
Joe & Veronica Nessler
Nestle Nutrition
Nestle Purina
Nestle USA/Coffeemate Creamers
Bruce & Carolyn Neubauer
Hoang Nguyen, M.D. & Regional
Diagnostic Radiology
Eleanor Hemstreet Nickles &
William Nickles
Northwestern Mutual
NXC Imaging
O'Hara's Brew Pub & Restaurant
Gerry & Carole Otto
Judith M. Ozbun
Dr. Scott & Susan Palmer
Palmer Printing Company

Troy & Sandra Payne
Paynesville Lions Club
Marilyn Peitso, MD & Peder Hegland
Diane Pelant
Ken & Jeannette Pesta
Drs. Ted & Jane Peterson
Dr. Brett A. & Jonathan Pinkerton
Jean Poganski
Noel & Cindy Johnson–
Premier Real Estate
Proctor & Gamble
Shannon J. Quinlivan
Stephanie Randolph
Dr. Deborah Rasmussen
Dr. Jodi K. Regan & Dean Moritz
Bret & Nicole Reuter
Dr. Nathaniel & Valerie Reuter
Millie Rice
Richard N. Klein Living Trust
Aleen & Rick Roehl
Barbara Rogan
Deacon Kenneth W. & Michele A. Roshia
Gary & Denise Rosin
Deacon Jerome Roth
Richard B. Ruhoff
Gregory O. & Carol J. Rupp
Saint Paul City Ballet
Vernon Salzl
Juli Sanner
Thomas & Cheri Satre
Marilyn A. Savage
Scenic Specialties Landscape Center
Dr. Richard & Rita (+) Schaefer
Barb Scheiber
Jane Scherber
Armella Schimnich
James & Joan Schlenner–
Schlenner, Wenner & Co.
Judith C. Schmid
Melanie & Christian Schmidt
Doug & Mary Schmidt
Mike Mavetz & Mary Beth Schmitt
David Schoenborn
Gary & Bobbi Schroeder
Dr. Timothy N. & Amy Schuchard
Mary Scott
SCR
Jeff Sell
Sentry Bank
Joe & Kathy Sexton
Ken & Marcia Shane
Sherburne County Public Health
Marie & Steve Siegle
Joseph & Valerie Silva
Tereasa Simonson MD–
Regional Diagnostic Radiology
SJA Architects
Smithfield Farmland Corp.
Snyder's of Hanover, Inc.
Joel & Jennifer Spalding
Drs. Kim & Chad Spaulding
Kevin & Anita Spellacy
Steve & Jean Sperl
St. Cloud Foot & Ankle Center, PA
St. Cloud Medical Group South Campus
St. Cloud Medical Mission Fund
St. Cloud Orthopedic Associates, Ltd.
St. Cloud Sertoma Club
St. Cloud State University
St. Cloud Subaru

St. Cloud Technical &
Community College
St. Cloud Toyota
St. Cloud Westside Sertoma Club
St. Cloud Window, Inc.
Gary & Jill Stang
Bert Stanley
State Farm Insurance
Paul W. Steil & Elizabeth Wenner Steil
Robert & Mary Stein
Todd (+) & Cindy Steinke
Heidi, Natalie, Kathryn, Joseph &
Benjamin Stiegel
Mary Stiles, MD
Tom & Lori Stock
Drs. Robert E. Stocker &
Catherine A. Matuska
Bob & Laurie Strack
Strack Companies
Streed Family LMTD Partnership
Terry & Dr. Janelle K. Strom
Debra D. & Donald H. Stueve
Dr. Pradub & Rampai Sukhum
Dr. Read & Tammy Sulik
Drs. Dale J. Minnerath &
Sylvia R. Sundberg
Sunray Printing Solutions, Inc.
Supervalu Foundation
SuperValu, Inc.
Dr. Kevin & Linda Switzer
Take Heart America Sudden Cardiac
Arrest Survival Initiative
Mike Tenvoorde & Lily Gould
TDS
Larry D. (+) & Margo A. Tepley
The Catholic Foundation–
Diocese of St. Cloud
The Change Companies
The JM Smucker Company
The Smile Train
The St. Cloud Morning Optimist Club
Joleen & John Thell
Kelly Thomson
Robert & Joann Thueringer
Dr. Daniel J. & Julie S. Tiede
Brad & Cathy Tieva
Times Media & St. Cloud Times
Traut Wells
Trudeau Distributing
Dr. Hilary I. & Lilyan Ufearo
Unilever
University of Minnesota
Urban Associates, Inc.
Kate VanBuskirk
Kay & Philip VanderStoep
Amy & Roderick Vansurksun
Dr. Timothy G. & Valerie Vedder
Verizon
Verso Paper
Veterans of Foreign Wars East Side
Post 4847
Loren M. & Debra J. Viere
Joan & Steve M. Vincent, Ph.D.
Jane Vortherms
Dena & David Walz
Patrick & Gwen Wampach
Shirley Ann Wampach
Christine Warzecha
Dr. Dove D. & Tracey L. Watkin
Melissa & Ryan Weber

Mary Ellen Wells
 Janet & Tim Wensman
 Werschay Homes
 Julia M. Westendorf
 Margaret & Michael White
 Thomas Wieber
 Tom & Cathy Williams
 Greg & Beth Windfeldt
 Rose & Mike Windschitl
 Womens Golf Association
 Judith & Tom Wyne
 Xcel Energy Services, Inc.
 Edward J. Zapp
 Mary L. & Walter R. Zastrow
 Peggy Zimmer
 John & Connie Zinter
 Michael Zyvoloski

BEACON SOCIETY

The following benefactors have named St. Cloud Hospital programs and services, St. Benedict's Senior Community or CentraCare Health Foundation as a partial beneficiary in their estates. (As of July 1, 2016)

Hani Alkhatib
 Tom & Sally Allen
 Rollie & Barbara A. Anderson
 Larry L. Asplin
 Roberta & Kevin Basol
 Ernest J. (+) & Eileen A. Bergeron
 Jason Bernick
 Dick & Mimi Bitzan
 Rose Mary (+) & Darwin Bonn
 Douglas J. & Tanya Boser—
 Boser Construction, Inc.
 Larry J. & Dawn C. Caswell
 Dan & Mabel Coborn
 Adeline Conlon
 Lester Engel
 Dr. Hans H. & Sharon L. Engman
 Wayne R. & Linda J. Engstrand
 Eugene & Jan Faulhaber
 John & Nancy Frobenius
 Jared Gapinski & Molly Meagher
 Ken & Deb Gieske
 Benedict F. (+) & Dorothy J. Gorecki
 Barb & Art Grachek
 Joan Groth
 Ross Hall & Tanya Vossberg
 Brad & Lisa Hanson
 Jack & Geri Happe
 Judge Elizabeth Hayden &
 Judge Charles Flinn, Jr.
 John & Mary Herges
 Joan Hicks
 Dennis & Tamara Holland
 Alcuin & Dorine (+) Illies
 Dr. Dwight E. & Audrey C. Jaeger
 Jagielski Family (+)
 Drs. Richard & Merryn R. Jolkovsky
 Roger & Susan Justison
 Linus (+) & Marina Koopmeiners
 Naomi Kowalik
 Tom (+) & Helen Krebsbach

Al & Yvonne Kremers
 Kevin & Ann Krenik
 William A. & Virginia M. Lee
 Steven Letnes
 Dr. Douglas R. & Taimi T. Liepert
 Duane & Patricia Lorsung
 Norie Mahowald
 Diane L. Marcotte
 Gary & Jane Marsden
 Scott & Mary Kay May
 Terri McCaffrey
 Dr. Cindy Jensen Melloy &
 Thomas P. Melloy
 Dr. Chris & Denise Moellentine
 Patrick & Dawn Moen
 Dr. Paul T. & Nancy E. Moran
 Rosie & Roger Moran
 Roger A. & Barbara L. Moshier
 Gwen Muehring
 Eleanor Hemstreet Nickles &
 William Nickles
 Bob Niehaus & Deb Meis-Niehaus
 Charles D. Nielsen & Peggy L. Carlson
 Robert & Marilyn Obermiller
 Judith M. Ozbun
 Dr. Gregory & Ellen J. Pelletier
 Dr. Terence & Sue Pladson
 Daniel Purcell
 Dr. Nicholas & Bernice Reuter
 Denny & Karol Ringsmuth
 Chad & Paula Roggeman
 Gary & Denise Rosin
 Phil & Evelyn Ruggiero
 Richard B. Ruhoff
 Gregory O. & Carol J. Rupp
 Marilyn A. Savage
 Tom & Joyce Schlough
 Jacqueline M. Schuh in memory of
 Joan M. Schuh
 Marjorie Schwartz
 Connie Schwinghammer
 Bob & Sandy Sexton
 Christopher Shorba
 Michael & Patricia Sipe
 Todd (+) & Cindy Steinke
 Dr. Wesley J. & Jean A. Streed
 M.J. & Richard Swanson
 Louise E. Theisen
 George & Shirley Torrey
 Arlene Truszinski Clement
 Keith Ulrick & Bernie Perryman
 John & Mary Weitzel
 Hugo & Rita Weyrens
 Brad & Kathy Wheelock
 Diane & John (+) Wojtanowicz/
 Prairie Farm Company

2016 NAMED FUNDS

The following endowment funds have been created by individuals to carry on family names or to honor special physicians, caregivers or friends. The principal of these gifts is invested and the interest is used to support the area designated by the benefactor. (As of July 1, 2016)

Al & Yvonne Kremers Fund
 Al Kremers Fund
 Alcuin & Dorine Illies Fund
 Almeda Ella Polish Fund
 Anna & Gracie Fund
 Arthur F. & Barbara A. Grachek Fund
 Aunt Leona Fund
 Barb Caspers Fund
 Bernie Belling Recovery Fund
 Bill & Jean Kane Fund
 Bill & Virginia Lee Fund
 Bonnie & Stephen Bologna Fund
 Boser Family Fund
 Broker Family Fund
 Carl & Marilyn Savage Fund
 Celestine & Mary Lieser Fund
 Chris Shorba Fund
 Clara's Fund
 Craig & Lynn Dahl Fund
 Darwin & Rose Mary Bonn Fund
 Dr. Edward & William Martin-Chaffee
 Family Fund
 Dr. Fred & Lynn Engman Fund
 Dr. Gerald L. & Karen Jurgens
 Cancer Survivorship Fund
 Dr. Hans Engman Diabetes Fund
 Dr. Harold E. Windschitl Cancer
 Research
 Dr. Joseph & Patty Blonski Family Fund
 Dr. Luther & Julie Aronson
 Dehnell Fund
 Dr. Nicholas & Bernice Reuter Fund
 Dr. Philip Halenbeck Education
 Dr. Richard & Patricia Hart Fund
 Dr. Robert Cumming Family Practice
 Elizabeth Hayden & Charles Flinn,
 Jr. Fund
 Fabian & Donna Eickhoff Family Fund
 Flanagan Family Fund
 Fred & Del Sexton Fund
 Fred M. Riegger Fund
 Gene & Sheelah Windfeldt Fund
 George & Shirley Torrey Fund
 George J. McDowall Memorial Fund
 Granite City Dental Lab—
 William & Karen Young Fund
 Greater MN Fight for a Cure Fund
 Hank & Dee Coppock Fund
 Harold & Carole Groustra Cancer Fund
 Helen Liljedahl Fund
 Herman Hollar Memorial
 Scholarship Fund
 Hind Site Fund
 Irene Walsh Fund
 Jagielski Family Fund
 Jake & Mary Essen Alzheimer's
 Education Fund
 James & Helen Nahan Family Fund
 James & Marion Miller Fund
 Jean Kershner Lung Cancer Fund
 Jerome E. Schmitz Tobacco
 Cessation Fund
 John & Delphine Undersander Fund

John & Maryanne Mahowald Fund
 John & Nancy Frobenius Breast
 Cancer Fund
 John R. Frobenius Fund
 Joseph J. & Susan M. Kuhl Heart
 Center Fund
 Karla & Mark Donlin Fund
 Kathy Janson Memorial Fund
 Kay Pattison Fund
 Kevin & Linda Switzer Fund
 Kevin J. Hughes Medical &
 Legal Ethics Fund
 Kidney Klimb Fund
 Knevel Family Fund
 Kristine Cunningham Rose
 Memorial Fund
 Larry Asplin Fund
 Lee & Mary Torborg Spiritual Care Fund
 Leonard & Catherine Horn Fund
 Liepert Family Fund
 Lillian's Garden Fund
 Linda Chmielewski Nursing Fund
 Louise E. Theisen Fund
 Madigan/Mosford Family Fund
 Marco Health Fund
 Mark D. Holm & Susie Osaki Holm
 Research Fund
 McDowall Company, John &
 Cherie McDowall Fund
 Mike & Joni Karl Family Fund
 Nemeth Family Fund
 Nicholas & Terese Houle Fund
 Partners in the Art of Recovery Fund
 Pat Opatz Cancer Research
 Paul & Joanne Dorscher Fund
 Payton Blomstrom Perinatal &
 Pediatrics Palliative Care Fund
 Paul T. & Nancy E. Moran Fund
 Peggy L. Carlson—Charles D. Nielsen
 Hope Fund
 Quinlivan & Hughes Fund
 RDR Advised Fund
 Richard & Merryn R. Jolkovsky Fund
 Richard B. Ruhoff Fund
 Robert & Nancy Ferche Family Fund
 Robert & Sandy Sexton Fund
 Robert Mahowald Sr. Fund
 Rosalie Timmers Junior
 Volunteer Scholarship
 Rose Mary Bonn Garden Fund
 Ruggiero CentraCare Health
 Volunteer Scholarship Fund
 Sallie Engel Trauma Survivor's
 Education Fund
 Sam Ellis Fund
 SCH School of Nursing
 Alumni Scholarship
 Sev & Ruth Koop Fund
 Steven J. Stiegel Memorial Fund
 Streed Family Cleft & Craniofacial Fund
 Sue & Terry Pladson Fund
 Swartout Family High Risk
 Pregnancy Fund
 Sy & Corrine Janochoski
 Donor Advised
 Todd & Cindy Steinke Family Fund
 Todd Steinke Memorial Fund
 Wayne & Hazel Bonn Memorial Fund
 Weitzel Family Fund
 William J. Held Memorial Scholarship
 Wojtanowicz Family Fund
 Yvonne Obermiller Kremers
 Nursing Scholarship

CADUCEUS SOCIETY

A philanthropic guild of CentraCare Health Foundation open to Central Minnesota practicing and retired medical staff who make a gift to support the Foundation's mission of improving health and health care. Members achieve active standing by contributing to the CentraCare Health Foundation Caduceus Society during the current calendar year. Legacy standing is achieved once a Caduceus Society member has cumulatively given \$10,000 or more. (As of July 1, 2016)

Active Members

Dr. Richard & Michaela Backes
Dr. Christopher K. & Johanna Balkany
Dr. Burton R. & Evelyn H. Bancroft
Dr. Dante & Jaimie Beretta
Dr. Joseph M. & Patty Blonski
Drs. Steven H. & Barbara J. Bollinger
Dr. Stephen M. & Bonnie Bologna
Dr. Philip F. & Kristine Boyle
Dr. Frank T. & Alice L. Brown
Tammi Congdon, MD
Dr. Lindsey R. Chmielewski & Selvin Gonzalez
Dr. Stephen P. & Beth Cragle
Dr. Thomas L. & Mary M. Cress
Dr. Steven M. & Rhonda Kopp Danielson
Dr. Eileen H. & Brian H. Dauer
Dr. Amy & Eric Dearing
Dr. Luther (+) & K. Julie Aronson Dehnel
Peter & Nancy Dehnel
Dr. Jeffrey & Rebecca Derr
Dr. Paul J. & Joanne E. Dorsher
Dr. Rene & Milady Eldidy
Dr. Ronald L. & Marsha D. Elg
Dr. Dahlia Elkadi
Dr. Fred J. & Lynn Engman
Drs. Alan D. & Adella Espelien
Dr. Kelly B. & Neil C. Fandel
Dr. David L. & Cindy Furda
Dr. John H. & Jeanne M. Geiser
Dr. Winn & Denise Gregory
Dr. Albert S. & Janice Hammond
Drs. Ronald D. & Michelle Hanson
Dr. Mark D. & Joanne C. Hauge
Dr. Patrick & Juliann Heller
John Hering, M.D.
Dr. Ken & Linda Holmen
Dr. Kevin S. & Carol Holton
Dr. Allen & Laura Horn
Drs. Weining Hu & Yi Zheng
Drs. Stacia Anderson & Matthew Hwang
Dr. Geri Jacobson & Michael Jacobson
Dr. Dwight E. & Audrey C. Jaeger
Peter & Janelle Johnson
Drs. Richard & Merryn R. Jolkovsky
Dr. Gerald L. & Karen Jurgens
Dr. Donald J. Jurgens
Dr. Brian R. & Bonnie J. Kay
Dr. David A. & Susan M. Kroska
Dr. David A. & Frida T. Kruse
Dr. Patrick M. & Debra S. Lalley
Dr. Lianse C. & Livia Lang
Dr. Srilakshmi Lankireddy & Vamsi Dwaram
Dr. Nathan D. & Leslie Lee
Dr. Danielle & Michael Leighton
Dr. Thomas W. & Deanne Leither

Dr. Girum Lemma & Wuby Akalu
Dr. Stephen & Debbie Leslie
Dr. David R. & Gretchen Lindgren
Drs. Yang Lo & Rachel Schuneman
Dr. James W. & Vicki Lundeen
Dr. John Mahowald & Donna Kuhl
Dr. Maria & Jason Mallory
Dr. Andrew & Sarah Maloney
Dr. Edward & William Martin-Chaffee
Kenneth K. Maslonka
Dr. Mark & Ronda Matthias
Drs. Robert E. Stocker & Catherine A. Matuska
Dr. Eric T. McFarling
Dr. Lynn M. McFarling
Dr. Carl M. Melling
Dr. Cindy Jensen Melloy & Thomas P. Melloy
Joel Miron, M.D.
George & Mary Kay Morris
Dr. Randy & Vicki Nelson
Dr. Joseph P. & Veronica Nessler
Dr. Troy & Sandra Payne
Drs. Theodore A. & Jane M. Peterson
Dr. Elizabeth Phillips
Dr. Gregory C. & Mary P. Pippert
Dr. Deborah Rasmussen
Dr. Nathaniel & Valerie Reuter
Dr. Nicholas & Bernice Reuter
Dr. William (+) & Millie Rice
Dr. Tiffany & Eric Rickbeil
Rieke Family
Dr. David J. & Susan M. Roberts
Jessie L.K. Roske MD
Dr. Sharon J. Ruggiero
Drs. Brian & Susanne Rupert
Dr. Thomas J. & Cheryl J.K. Satre
Dr. Robert J. & Judy Scheuerell
Melanie & Christian Schmidt
Dr. Michael & Kate Schmitz
Dr. John M. & Amy Schmitz
Dr. Thomas G. & Myra Lee Schrup
Dr. Timothy N. & Amy Schuchard
Todd & Lisa Severnak
Dr. Joel C. & Susan Shobe
Kevin Simons, MD, NREMT-P
Dr. David L. & Jill Smith
Drs. Kevin Smith & Angelina Ausban
Dr. Stephen (+) & Mary Sommers
Dr. Joel P. & Jenny Spalding
Dr. Lawrence G. Strate
Dr. Wesley J. & Jean A. (+) Streed
Dr. Fareed Suri & Aqsa Nadeem
Lola Sutherland MD
Dr. Heather Swanson & family
Dr. Jessica & Andy Swartout
Dr. Kevin & Linda Switzer
Dr. Christopher M. & Karen Tacl
Dr. Tracey B. Thompson
Drs. David & Janet Tilstra
Dr. Theodore O. & Andrea B. Truitt
Dr. Hilary I. & Lilyan Ufearo
Dr. Paul E. Van Gorp & Roberta M. Knutson
Dr. Timothy & Valerie Vedder
Dr. Dove D. & Tracey L. Watkin
Dr. Christopher Widstrom
Dr. Darin D. & Katy Willardsen
Dr. Thomas L. & Judith A. Wyne
Dr. Joseph & Teresa Zeleny Fund
Dr. Patrick & Penny Zook

Legacy Members

Dr. Oluade A. & Adeyoola A. Ajayi
Dr. Hani S. & Majedah Alkhatib
Drs. Stacia Anderson & Matthew Hwang
Drs. Robert Ang & Belen Dy
Drs. Kevin Smith & Angelina Ausban
Dr. Richard & Michaela Backes
Dr. Burton R. & Evelyn H. Bancroft
Dr. Joseph M. & Patty Blonski
Drs. Steven H. & Barbara J. Bollinger
Dr. Stephen M. & Bonnie Bologna
Dr. Jon C. & Barb Bowar
Dr. Philip F. & Kristine Boyle
Dr. Bryan J. & Kirsten H. Brindley
Dr. Frank T. & Alice L. Brown
Dr. Dennis & Jeanne Carreras
Dr. & Mrs. Thomas H. & Paulette M. Como
Dr. Stephen P. & Beth Cragle
Dr. Thomas L. & Mary M. Cress
Dr. Robert (+) & Patricia Cumming
Dr. Eileen H. & Brian H. Dauer
Dr. Luther (+) & K. Julie Aronson Dehnel
Dr. Michael J. & Roberta L. Dorle
Dr. Paul J. & Joanne E. Dorsher
Dr. Craig M. & Jennifer Doschadis
Dr. Ann Dunnigan
Dr. Charles Ehlen
Dr. Rene & Milady Eldidy
Dr. Walter N. & Trecia Ann Ellis
Dr. Fred J. & Lynn Engman
Dr. Hans H. & Sharon L. Engman
Dr. Jason & Debra Erickson
Dr. Kelly B. & Neil C. Fandel
Drs. Daniel & Debra Ferraro
Dr. Michael C. & Kendra Flanagan
Dr. John H. & Jeanne M. Geiser
Drs. Jeffrey S. & Terri T. Gerdes
Dr. Winn & Denise Gregory
Dr. Albert S. & Janice Hammond
Drs. Ronald D. & Michelle Hanson
Drs. Chad A. & Sheri Haroldson
Dr. Richard W. & Patricia Hart
Dr. Mark D. & Joanne C. Hauge
Drs. H. Thomas (+) & Kathleen Hobday
Dr. Mark D. & Susie Osaki Holm
Dr. Ken & Linda Holmen
Dr. Allen & Laura Horn
Drs. Weining Hu & Yi Zheng
Dr. Scot W. & Gretchen Hutton
Dr. Dwight E. & Audrey C. Jaeger
Dr. Craig M. & LuAnne Johnson
Drs. Richard & Merryn R. Jolkovsky
Dr. James L. & Mary Jost
Dr. Donald J. Jurgens
Dr. Gerald L. & Karen Jurgens
Dr. Barbi Kaplan-Frenkel & Theodor Frenkel
Drs. Jerome P. & Mary U. Keating
Dr. Robert J. & Joanne Keck
Dr. James (+) & June Kelly
Dr. Todd M. & Laura Kor
Dr. David A. & Susan M. Kroska
Dr. Barry A. & Leslie Labine
Dr. John M. & Nancy Lacika
Dr. Patrick & Debra Lalley
Dr. Patrick M. & Debra S. Lalley
Dr. Henri P. & Patricia Lanctin
Dr. Lianse C. & Livia Lang
Dr. Theresa M. & John Lau
Dr. Elaine Lee

Dr. Thomas W. & Deanne Leither
Dr. Girum Lemma & Wuby Akalu
Dr. Douglas R. & Taimi T. Liepert
Dr. David R. & Gretchen Lindgren
Dr. James W. & Vicki Lundeen
Dr. Todd D. & Sarah Magnuson
Dr. John Mahowald & Donna Kuhl
Dr. Creston M. Martin
Dr. Edward & William Martin-Chaffee
Dr. Mark J. & Lisa B. Martone
Dr. John & Joyce Matsuura
Dr. Mark & Ronda Matthias
Dr. Eric T. McFarling
Dr. Lynn M. McFarling
Dr. Cindy Jensen Melloy & Thomas P. Melloy
Dr. Simon & Renee Milstein
Drs. Dale J. Minnerath & Sylvia R. Sundberg
Dr. Andre' L. & Lakisha Mitchell
Dr. Chris & Denise Moellentine
Dr. Paul T. & Nancy (+) Moran
Dr. Tracy E. Napp
Dr. Frank P. & Tracy Nellans
Dr. Peter & Laurie Nelson
Dr. Joseph P. & Veronica Nessler
Drs. Hoang Nguyen & Nhan Quyen
Dr. Troy & Sandra Payne
Drs. Theodore A. & Jane M. Peterson
Dr. Brett A. & Jonathan Pinkerton
Dr. Terence & Sue Pladson
Dr. Jodi K. Regan & Dean Moritz
Dr. John R. & Kathryn A. Reisinger
Dr. Nathaniel & Valerie Reuter
Dr. Nicholas & Bernice Reuter
Dr. William (+) & Millie Rice
Dr. David J. & Susan M. Roberts
Dr. Thomas J. & Cheryl J.K. Satre
Dr. John M. & Amy Schmitz
Dr. Thomas G. & Myra Lee Schrup
Dr. Timothy N. & Amy Schuchard
Dr. Tereasa & Eric Simonson
Dr. David L. & Jill Smith
Dr. Stephen (+) & Mary Sommers
Dr. Joel P. & Jenny Spalding
Drs. Kim & Chad Spaulding
Dr. Michael & Nina Steil
Dr. Mary A. Stiles
Drs. Robert E. Stocker & Catherine A. Matuska
Dr. Wesley J. & Jean A. (+) Streed
Dr. Janelle K. & Terry D. Strom
Dr. Pradub & Rampai Sukhum
Dr. Read & Tammy Sulik
Dr. Fareed Suri & Aqsa Nadeem
Dr. Jessica & Andy Swartout
Dr. Kevin & Linda Switzer
Dr. John Teskey & Kathleen Mahon
Dr. Tracey B. Thompson
Dr. Daniel J. & Julie S. Tiede
Drs. David & Janet Tilstra
Dr. Theodore O. & Andrea B. Truitt
Dr. Hilary I. & Lilyan Ufearo
Dr. Paul E. Van Gorp & Roberta M. Knutson
Dr. Philip H. & Kay VanderStoep
Dr. Roderick D. & Amy Vansurksun
Dr. Timothy & Valerie Vedder
Dr. Dove D. & Tracey L. Watkin
Dr. Daniel J. & Judy A. Whitlock
Dr. Darin D. & Katy Willardsen
Dr. Harold E. & Shirley Windschitl
Dr. Thomas L. & Judith A. Wyne
Dr. Mohamed S. Yassin

CAPITAL CAMPAIGN SPOTLIGHT: LONG PRAIRIE AND MELROSE

Healthcare is about to change in two Central Minnesota communities as new medical campuses are taking shape in both Long Prairie and Melrose. From a distance, they look like massive construction projects, but dig deeper and you'll find what makes these facilities special is the community efforts that are helping make these dreams reality.



In Long Prairie, CentraCare Health is building a \$40 million new medical campus and assisted living facility that will serve the community for generations to come. The project was made possible by one of the most remarkable community fundraising efforts to date. This small community came together to donate more than \$2.5 million to support the

project, which exceeded goals and expectations. "It was inspiring," said Dan Swenson, administrator, CentraCare Health – Long Prairie. "It showed how a small, but passionate group of supporters can make a big difference for the entire community." More than 500 people donated generously to support the project, which will replace the current 60-year-old hospital. To learn more, visit: CentraCare.com/buildinglongprairie



A similar effort is taking place in Melrose. As part of CentraCare's commitment to this community, plans are moving forward for a \$26 million, 53,000 square-foot hospital that will serve as the new healthcare hub for people living in the area. It will replace the existing hospital and provide the much-needed facilities, amenities and resources to ultimately

improve the patient care experience and foster health care excellence. Fundraising efforts are underway to support pieces of the project that would not be possible without the generosity of the community. "The community is really rallying around this project," said Gerry Gilbertsen, administrator, CentraCare Health – Melrose. "The people of Melrose are excited about this new facility, which is going to be a really special place." To date, donors have contributed \$788,358 toward a goal of \$1.5 million to support this project, which is anticipated to open in winter 2017. To learn more, or to contribute to this effort, visit: CentraCare.com/buildingmelrosehospital

LA GRATITUDE

CentraCare Health Foundation hosted its annual La Gratitude celebration on October 29, 2015. The event honored the generous donors from the past year and recognized three donors with awards for their dedication and commitment to the CentraCare Health Foundation:



**MAE
ELLINGSON-
SKALICKY**
2015 Lifetime
Achievement Award

Mae received this award for her years of generosity and engagement to CentraCare Health.



**CHRISTY
GILLELAND**
2015 Rising
Star Award

Christy received this award for her dedication, involvement and philanthropy to CentraCare Health.



**LEE
HANSON**
2015 Service to
Foundation Award

Lee received this award for his work as a philanthropist and his "over the top" service to CentraCare Health.

